

Aerheat Electric Panel Heaters

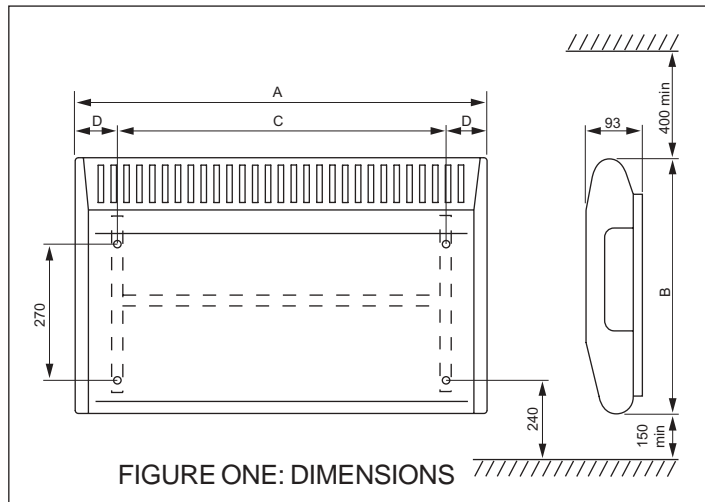
Fitting Instructions and User Guide

THANK YOU FOR PURCHASING THIS HEATRAE SADIA AERHEAT PANEL HEATER. IT HAS BEEN DEVELOPED TO PROVIDE YOU WITH MANY YEARS OF TROUBLE FREE SERVICE WHEN INSTALLED IN THE CORRECT MANNER.

PLEASE READ AND UNDERSTAND THESE INSTRUCTIONS PRIOR TO INSTALLING YOUR HEATRAE SADIA AERHEAT PANEL HEATER. FOLLOWING INSTALLATION AND COMMISSIONING, THE OPERATION OF THE AERHEAT PANEL HEATER SHOULD BE EXPLAINED TO THE CUSTOMER AND THESE INSTRUCTIONS LEFT WITH THEM FOR FUTURE REFERENCE.

TECHNICAL SPECIFICATIONS

Voltage	230V - 240V	Electrical class	1
Frequency	50Hz - 60Hz	Ingress protection	IPX4
Rated power	See Table One	Dimensions	See Figure One & Table One



Model	Watts	Thermostat	Thermostat & Timer	Stainless Steel	Dimensions			
					A	B	C	D
A050	500	■			442	430	196	123
A075	750	■			442	430	196	123
A100	1000	■			614	430	364	125
A125	1250	■			614	430	364	125
A150	1500	■			680	430	448	116
A200	2000	■			852	430	616	118
A050TI	500		■		442	430	196	123
A075TI	750		■		442	430	196	123
A100TI	1000		■		614	430	364	125
A125TI	1250		■		614	430	364	125
A150TI	1500		■		680	430	448	116
A200TI	2000		■		852	430	616	118
A050SS	500	■		■	442	430	196	123
A075SS	750	■		■	442	430	196	123
A100SS	1000	■		■	614	430	364	125
A125SS	1250	■		■	614	430	364	125
A150SS	1400	■		■	680	430	448	116
A200SS	2000	■		■	852	430	616	118
A050TISS	500		■	■	442	430	196	123
A075TISS	750		■	■	442	430	196	123
A100TISS	1000		■	■	614	430	364	125
A125TISS	1250		■	■	614	430	364	125
A150TISS	1400		■	■	680	430	448	116
A200TISS	2000		■	■	852	430	616	118

TABLE ONE: MODEL SPECIFICATION

1.0 SAFETY INSTRUCTIONS

- 1.1 Always disconnect the Aerheat Panel Heater from the mains before removing the cover.
- 1.2 DO NOT switch the Aerheat Panel Heater ON with the cover removed.

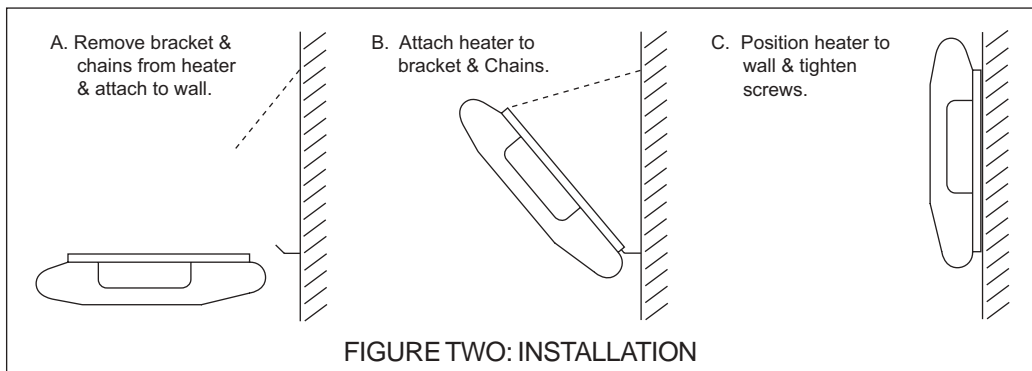
WARNING - Improper use of electrical appliances can give rise to hazards that children cannot recognize.

2.0 INSTALLATION - IMPORTANT POINTS

- 2.1 Check the mains electrical supply is within the range 230V to 240V AC 50/60Hz before connecting the Aerheat Panel Heater.
- 2.2 This Aerheat Panel Heater is fitted with flexible 3 core supply cable and should be connected permanently to a fused double pole isolating switch, with a contact separation of at least 3mm in both poles.
- 2.3 The Aerheat Panel Heater must be installed by a competent electrician.
- 2.4 The Aerheat Panel Heater can only be wall mounted.
- 2.5 All electrical work must comply with the relevant parts of both the latest BS7671(IEE Wiring Regulations) and part P Building Regulations.
- 2.6 This Aerheat Panel Heater MUST be earthed.
- 2.7 The Aerheat Panel Heater may be installed in Zone 3 of a bathroom but must be located so that switches and other controls cannot be touched by a person in the bath or shower.
- 2.8 The Aerheat Panel Heater must not be located immediately below a socket outlet or fixed connection point.
- 2.9 When switched on for the first time, the Aerheat Panel Heater may emit a slight odour. This is normal and will stop after a short period of time.

3.0 INSTALLATION - WALL MOUNTING

- 3.1 Remove the wall bracket from the Aerheat Panel Heater, with the chains attached, by removing the two screws from the top of the rear panel.
- 3.2 Fix the wall bracket to the wall through the four wall bracket holes using suitable wall fixings. (Not supplied).
- 3.3 Present the Aerheat Panel Heater to wall bracket.
- 3.4 Locate the two slots in the rear panel on to the bottom lugs of the wall bracket. Hinge the Aerheat Panel Heater upwards and replace the screws and link plates of the chain, then move the Aerheat Panel Heater to the upright position. The link plates should slide under the slotted bracket lip.
- 3.5 Tighten both retaining screws.



4.0 OPERATION

The Aerheat Panel Heater controls are located within a door on the right hand side.

THERMOSTAT CONTROL

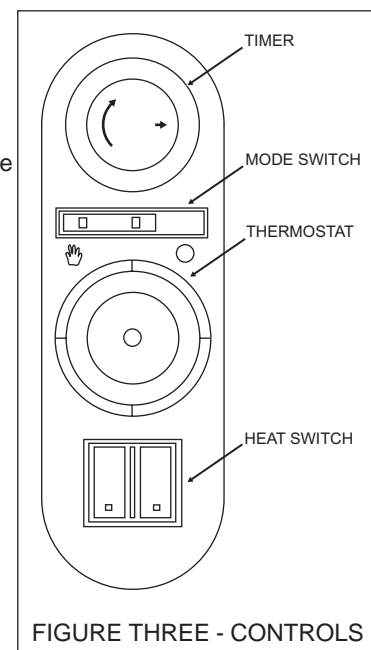
- 4.1 When the Aerheat Panel Heater is connected to the mains and is switched 'ON' the neon light on the front of the Aerheat Panel Heater will illuminate.
- 4.2 To set the temperature level for the room, rotate the thermostat to the desired temperature setting. The higher the number, the higher the temperature. Once set, it is unlikely that it will have to be adjusted again.
- 4.3 To set the Aerheat Panel Heater on full power mode, ensure both heat switches are turned on. For half power mode, select just one switch. (NOTE:- Half power mode is not available on 500W models).

TIMER CONTROL

- 4.4 If a timer is fitted, the dial should be rotated clockwise until the arrow head is pointing to the correct time on the 24hr clock face.
- 4.5 For timer controlled operation, move the mode switch to the symbol showing a clock face.
- 4.6 The 24hr timer can be set to a number of 'ON/OFF' combinations. Move the black segments outwards to indicate the 'ON' period. Each segment represents 20 minutes of 'ON' time. The segments which are left pushed inwards represent the 'OFF' time.
- 4.7 These set times will repeat every 24 hours unless they are changed.

MANUAL OPERATION

- 4.8 For manual operation, move the switch to the symbol showing a hand. The Aerheat Panel Heater will now run continuously, controlled by the thermostat.



5.0 SAFETY

- 5.1 The Aerheat Panel Heater is fitted with an Electronic Safety (ES) Control. This is a device which switches the Aerheat Panel Heater OFF, if for any reason the unit overheats. The ES control can be re-set after the Aerheat Panel Heater has cooled down. To re-set the ES control, the following steps must be followed:-
- Switch the Aerheat Panel Heater OFF and leave for about 5 minutes.
 - Switch the Aerheat Panel Heater back ON and the ES control will re-set.
 - Check the Aerheat Panel Heater is working correctly. If the ES control operates again, the unit should be checked by a competent electrician.
- 5.2 To avoid a hazard due to inadvertent resetting of the thermal cut-out, the Aerheat Panel Heater must NOT be wired through an external timer or connected to a circuit that is regularly switched on and off by the utility.
- 5.3 For your own safety, the following list of precautions should be adhered to:
DO NOT site the Aerheat Panel Heater in a corner.
DO NOT handle the Aerheat Panel Heater with wet hands.
DO NOT use the Aerheat Panel Heater in areas where excessive dust is generated.
DO NOT touch the outlet grille when the Aerheat Panel Heater is in use.
DO NOT cover the Aerheat Panel Heater or restrict any aperture, to avoid overheating.
DO NOT leave young children unattended near the Aerheat Panel Heater when in use.

6.0 MAINTENANCE

- 6.1 Always switch OFF the Aerheat Panel Heater from the mains before cleaning.
- 6.2 The Aerheat Panel Heater should not require any maintenance, however, it is advised that the Aerheat Panel Heater is kept clean. An occasional wipe over with a soft cloth should be more than sufficient.
- 6.3 DO NOT use any abrasive substances on the surface of the Aerheat Panel Heater.
- 6.4 DO NOT use metal or furniture polish on any part of the Aerheat Panel Heater.
- 6.5 DO NOT use wet cloths, or in any way bring water into contact with the Aerheat Panel Heater.
- 6.6 If the supply cable is damaged, the Aerheat Panel Heater should be switched off until a competent electrician can assess the damage.

7.0 FAULT FINDING

IF YOUR HEATER DOES NOT WORK:-

- 7.1 Check your Aerheat Panel Heater has power available. The Neon light should be illuminated when the Aerheat Panel Heater is switched ON.
- 7.2 Check the thermal cut-out has not operated. Follow the re-set steps to check. (Section 5.1)
- 7.3 Check the fused spur has not blown.
- 7.4 Check the main consumer unit has not tripped.
- 7.5 Should none of these suggestions work, then please call the service number supplied on this manual.
- 7.6 Do not attempt to repair the heater.

8.0 GUARANTEE

THE AERHEAT PANEL HEATER IS GUARANTEED FOR TWO YEARS FROM THE DATE OF PURCHASE PROVIDED:-

- 8.1 The Aerheat Panel Heater has been installed in accordance with these instructions.
- 8.2 The Aerheat Panel Heater has not been tampered with.
- 8.3 The correct electricity supply is used as specified on the ratings label attached to the Aerheat Panel Heater.

This guarantee does not affect the statutory rights of the consumer.

9.0 ENVIRONMENTAL INFORMATION



Old appliances contain valuable materials that can be recycled. Do not dispose of such appliances with normal domestic waste but rather by way of your local authority recycling center.

HEATRAE SADIA

The quality name in water heating

Heatrae Sadia Heating
Hurricane Way Norwich NR6 6EA
www.heatraesadia.com
A division of BAXI GROUP

Main No: 01603 420100
Main Fax: 01603 420218
Sales: 08700 603262
Sales Fax: 08700 600403
Service: 08701 600125
Service Fax: 08701 600181