

# AQUATAP

## DRIP TRAY FITTING INSTRUCTIONS

- 1 Position the drip tray on a suitable work surface where access can be obtained from below.
- 2 With the aid of the hole template mark out the 125mm and 35mm holes in the work surface and cut out.
- 3 Fix the hoses to the dispenser with the clips provided, 2 for boil only and 3 for boil and chill/ambient
- 4 Feed the hoses and dispenser cable through the 35mm hole in the drip tray
- 5 Screw the 4mm screw through the drip tray into the dispenser body to align the dispenser with the drip tray, see fig 3
- 6 Taking care, feed the hoses and dispenser cable through the 35mm hole cut into the work surface. Align the drip tray into the 125mm hole cut into the work surface, making sure the spacer is placed between the drip tray and the work surface, see fig 1
- 7 Under the work surface fit the clamping bar onto the 6mm screw and with the 6mm nut clamp the drip tray to the work surface. Take care not to over tighten the clamp bar as this will distort the drip tray surface.
- 8 Fit the waste drain into the drip tray using the seals provided and clamp the waste drain to the drip tray, connect up the waste drain as per current building regulations:
  - The appropriate building regulations by application of either The Building Regulations (England and Wales), The Building Regulations (Scotland) or The Building Regulations (Northern Ireland). In territories other than those listed the local regulations in force must be complied with.
  - The Water Supply (Water Fittings) Regulations (England, Wales and Northern Ireland) or The Water Byelaws in Scotland.
- 9 It is advisable to run a small bead of silicone sealer around the drip tray to seal the work surface from any water ingress.

### **COMPONENT CHECKLIST**

Before commencing installation please check that all the following components have been supplied in the packaging:

- Drip tray
- Mesh assembly
- Drain assembly
- Clamp, nut and washer
- M6 stud extender, M6x80mm studding
- Screw, M4x 15
- Spacer
- Hole template

FIG 1- DRIP TRAY ASSEMBLY, EXPLODED VIEW

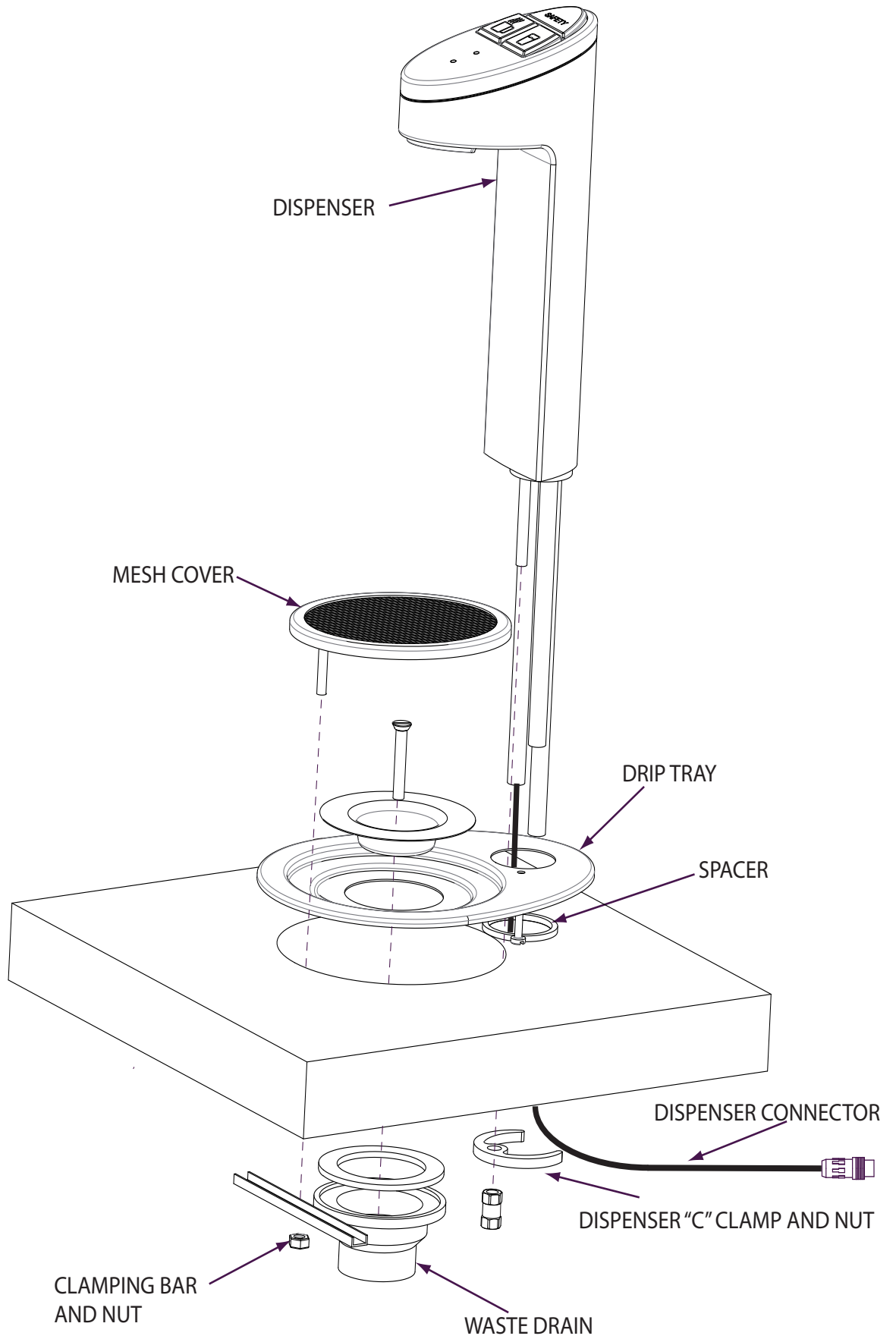


FIG 2- DRIP TRAY ASSEMBLY,  
UNDER SINK VIEW. PIPE-WORK  
OMITTED FOR CLARITY

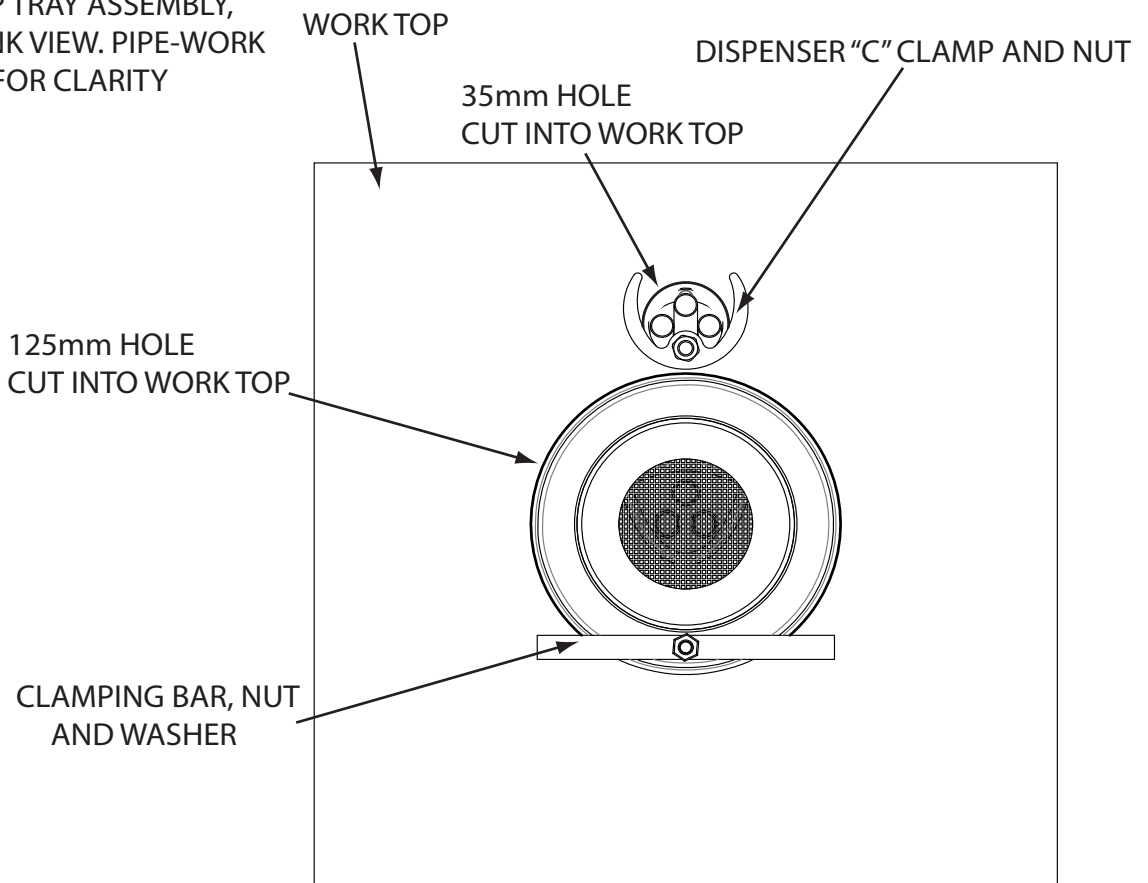
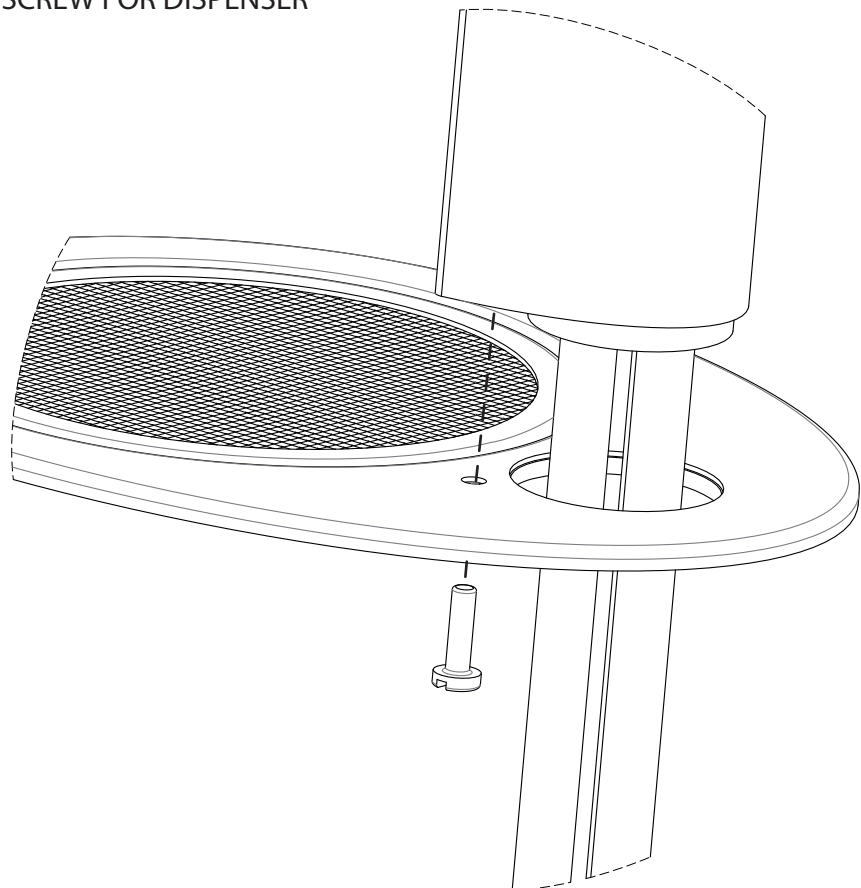


FIG 3 - SECURING SCREW FOR DISPENSER



# HEATRAE SADIA

SMARTER | CLEANER | WARMER

Service: 0844 8711535  
Service Fax: 0844 8711528  
E-mail: [heatraesadiaservice@heateam.co.uk](mailto:heatraesadiaservice@heateam.co.uk)

Heatrae Sadia Heating  
Hurricane Way Norwich NR6 6EA  
[www.heatraesadia.com](http://www.heatraesadia.com)

---